

Kitesurf Cabo Verde

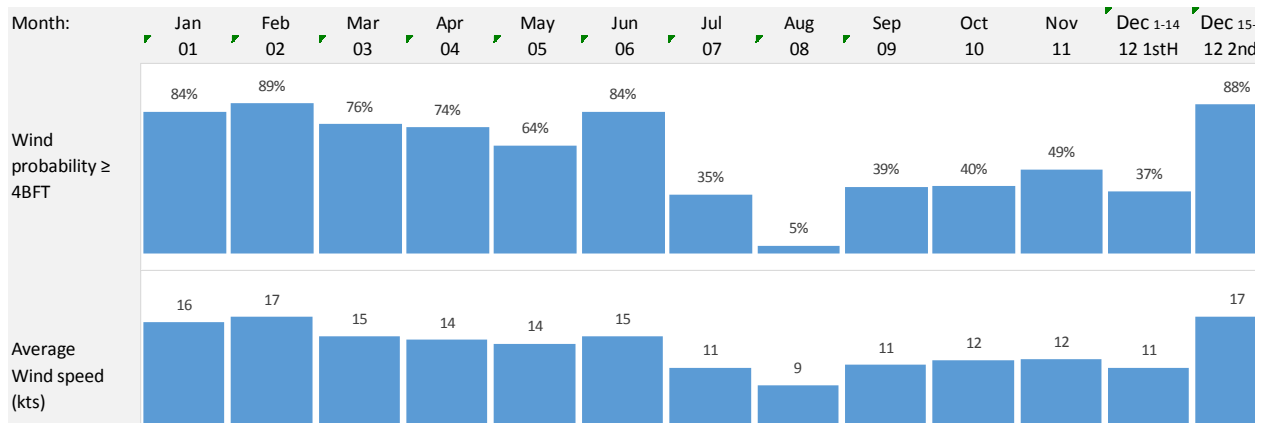
Wind, weather & water

Wind

The wind blows nearly every day from mid December until the end of June. On the rare occasion the wind does not blow (less than 10% of time), the windless days are limited to 3-4 days in a row. The vast majority of our guests enjoy good wind every day during the entire stay. Of course, there are no guarantees. So far we had 1 super unlucky guest experiencing 4 days in a row with insufficient wind.

At typical day at Salamansa beach the wind is blowing 16 knots) cross shore (NE or NNE) all day long, so typical kite sizes (depending on your weight and type of board you use) are: 9 – 12m.

During periods when global weather patterns change (El Nino and La Nina), the trade winds blowing over the Cabo Verde islands are affected. They become less consistent with more and longer periods of wind interruptions. It's worth spending some time to find kitesurf destinations where the wind is actually better during El Nino and La Nina years. One such place may be Western Australia.



On (and in) the water

What kitesurfers appreciate most about Sao Vicente is the amount of space on the water and the choice of wave conditions in a small area.

The local government maintain space on the water to keep the island special and to optimize safety. The restriction number is at the main spot, Salamansa by monitoring the number of kitesurfers on the water and keeping the number to a maximum of 18.

Please reserve in advance time on the water because sometimes bigger groups are coming so you may not be able to kitesurf without earlier reservation.

When Kitesurf NOW started the first kitesurf center at Salamansa, they took actions to deliberately avoid overcrowding such as seen during holiday periods in Sal in Cape Verde, Combuco in Brazil, Langebaan in South Africa, Isla Margarita in Venezuela and Boracay in the Philippines.

Thankfully, to date, the space on the water is still a unique feature of Salamansa.

The choice of wave conditions is amazing. You will not find one world class break such as Ponta Preta or One Eye. Instead, you'll find smaller waves (still up to 5m on a big day!) but more variety. Salamansa bay counts 5 varieties of waves (all from right):

- A shore break, powerful waves closing out fast with cross-onshore wind. Good for areal off-the-lips.
- A shore break, powerful waves closing out fast with cross-shore wind.
- A point break with waves holding shape with cross-offshore wind The point break has the biggest waves.
- Two reef breaks with waves holding shape with cross-offshore wind. These break are of intermediate size.
- A reef break with waves holding shape with cross-offshore wind. This break has the smallest waves. Some days the waves here as simply too small for wave riding.

Sao Vicente is one of the world's top kitesurf locations for those who have years of kiting experience and like the waves.

However, as is the case with all Cape Verde islands, the presence of waves make it less than ideal for those who like to learn to kitesurf .

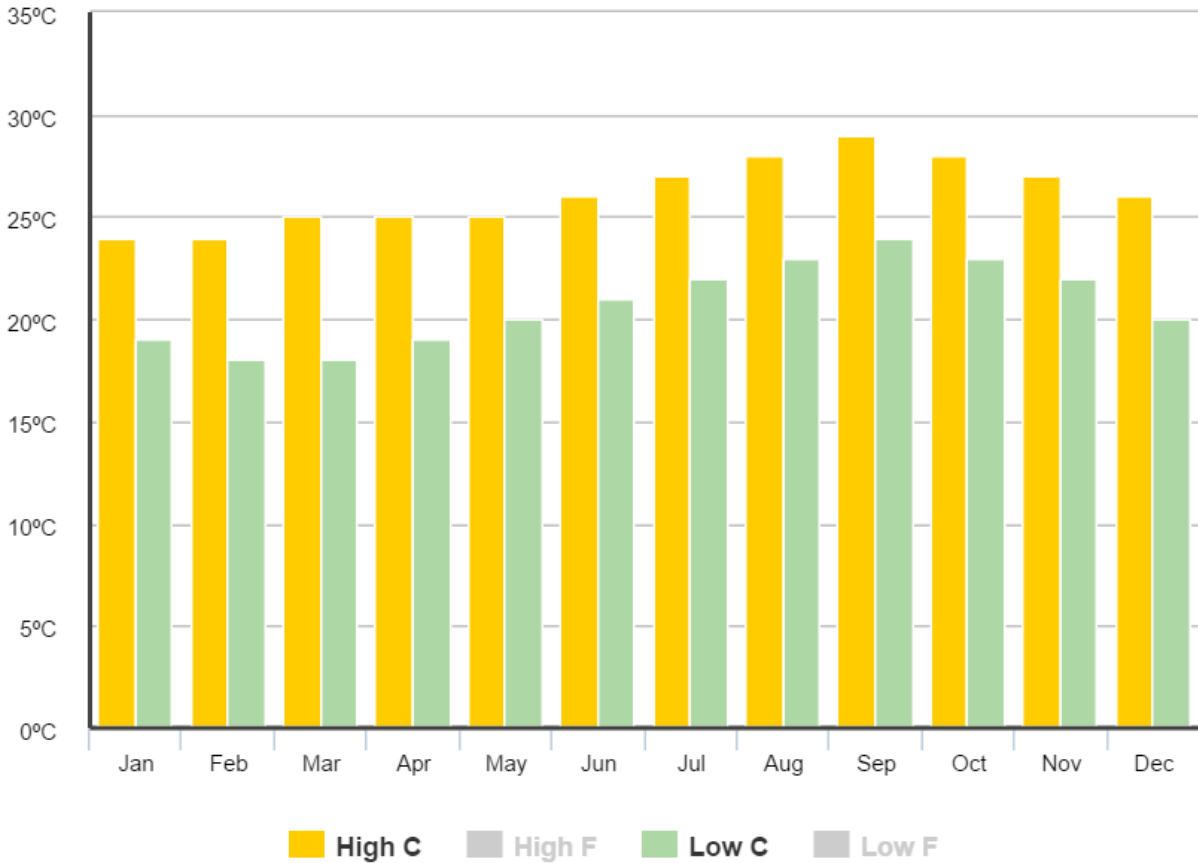
The temperature of the water is ranges from 22C to 26C during the windy season, so all you need is a shorty wetsuit.

Average sea temperatures in Celsius per month

	Jan	Feb	Mar	Apr	May	Jun	July	Aug	Sep	Oct	Nov	Dec
Sea	23	22	22	22	23	24	25	25	27	26	26	24

Air temperature

The temperatures during the windy season are comfortable during the day and not too high during the night for a good sleep.



The breeze and not too high humidity make for good conditions for activities such as hiking and mountain biking.

What you do need to take care of when spending many hours outside, is protection from the sun. Those with fair skin are advised to use sun block (factor 50).

Rainfall

